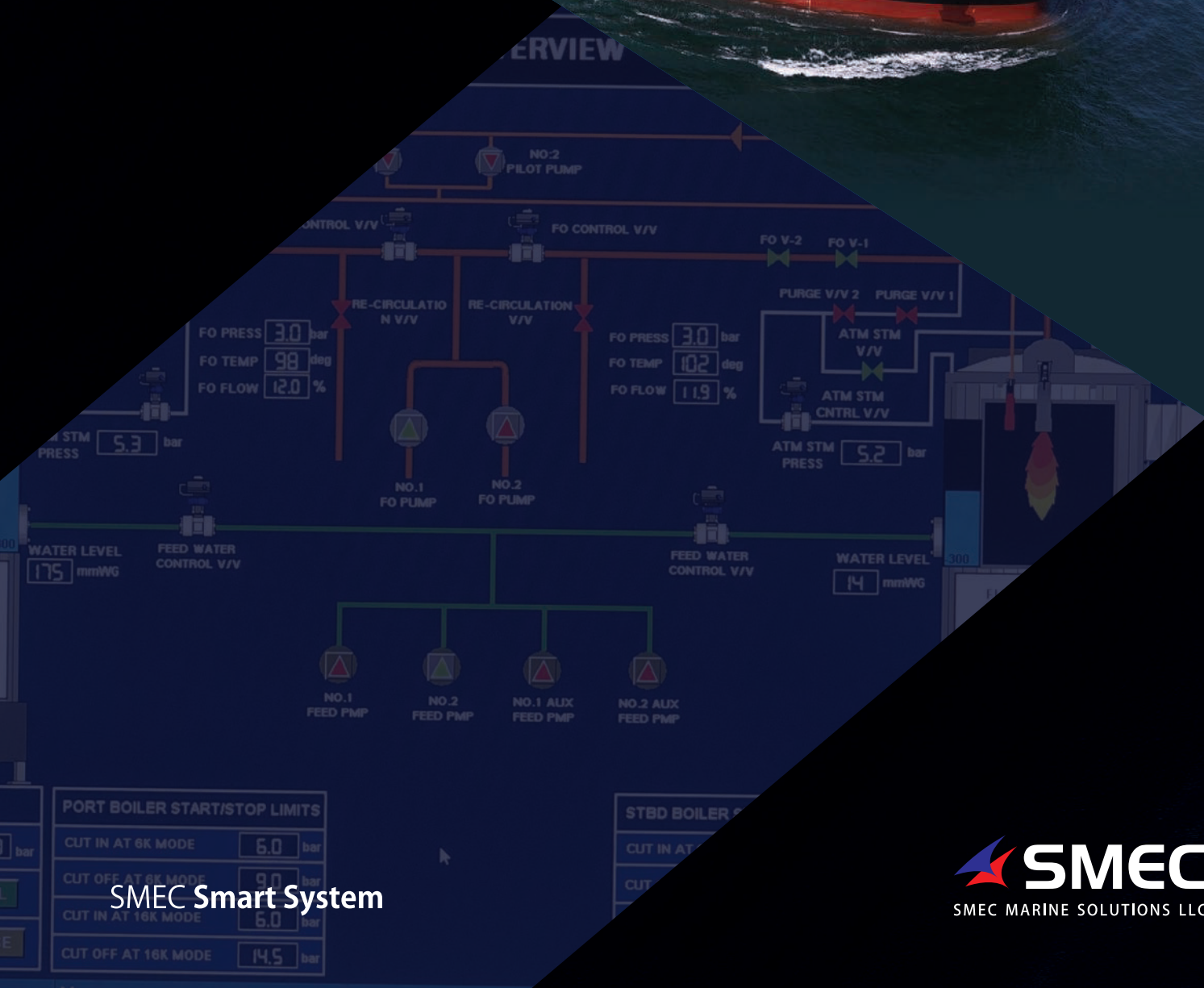


# SMEC Boiler Control Systems



SMEC Smart System

# SMEC Boiler control panel Retrofit Solutions

SMEC system combined with effective on-site commissioning tools makes it a logical choice when replacing your boiler control panel. SMEC Boiler control panel also prepares for future upgrades without high investment costs. We have extensive experience replacing various makers of in-house Boiler automation systems, having a clear, intuitive and advance control system makes it easy to improve operations on your vessel. SMEC Marine Solutions offers a smooth and simple way to replace your existing Aalborg and Mitsubishi boiler control system with the very highest standard in SMEC boiler control.

## What we do

SMEC Marine Solutions takes care of the entire retrofit process, from pre- inspection and engineering to reclassification and updating your documentation. You can rest assured, knowing that our service experts will handle everything from start to finish.

To ensure minimal disturbance of your daily operations, we can perform the retrofit either during your voyage or at a convenient time when your vessel is docked. Our high-quality project management matches the equipment supply to your schedule within 7 days, so that hardly any effort is needed from you.



SBCP is the modern control standard, providing the best in clarity and ease of use. It offers:

- Simple and Easy navigation in our monitor
- Easy boiler operation in both mode
- Easy control system maintenance
- Monitoring and control from all HMI
- Robust PLC-based design
- Future-proof expansion
- Real Boiler integrator in the marine industry
- 24/7 Technical support

Because SMEC -SBCP comprises Quality modules, its installation is fast and trouble-free.

## Benefits

- Quick and easy exchange of Control Panel
- Delivery time - 6-7 days
- Simplified boiler operation with better overview for both panel in one screen
- Online Fuel monitoring system integrated
- Advance shore trouble shooting and IO scanning features
- Mobile Application for Boiler status
- Easier connection to ship control and communications systems (coverage for all major bus interface)
- Upgradable software for easy integration of new features
- Future-proof expansion options

## Tension free operation

SMEC Marine Solutions has the largest global service network for boiler control systems. Our service hubs - which can be reached 24/7, 365 days a year - are located in major ports and can organize Field Service assistance as well. We are retrofitting all type of boiler control panels Alfa Laval mission boiler, Mitsubishi etc.

Last year SMEC replaced many Mission OL (Unis-ab),KBSD, and Mitsubishi type, MAC- 20B, MAC-25B, MAC-30B, MAC-35B, MAC- 40B, MAC-45B, MAC-50B and MAC-55B



To make sure all retrofit installations are a success we follow a procedure consisting of four steps:

- 1) **Site survey** : Our specialist carry out a site survey and prepare a site report. The report includes a suggested system layout, a detailed project milestone plan and a cost analysis. This site report forms the basis for a delivery contract.
- 2) **Engineering**: The system is carefully tailored to meet customer requirements and is outlined in a design document
- 3) **Installation**: The system is installed when the ship is in service or during docking, either by our own team of technicians or the customers own staff under the supervision of our engineer.
- 4) **Commissioning and training**: A team of experienced commissioning engineers make sure the system is properly set to work. These engineers also take care of all needed on-board training.



## Scope of service

SMEC Marine takes responsibility for the entire SBC Retrofit process. This includes:

### • Overview of existing setup

Either through pre-inspection or with the assistance of the vessel's crew, our experts assess the current setup (with or without MGO success).

### • Engineering and reclassification

Based on the pre-inspection and/or information provided by the vessel's crew, our experts undertake the necessary engineering work. We also manage the Installation of your vessel or vessel series with the upgraded control system.

## • Panel exchange

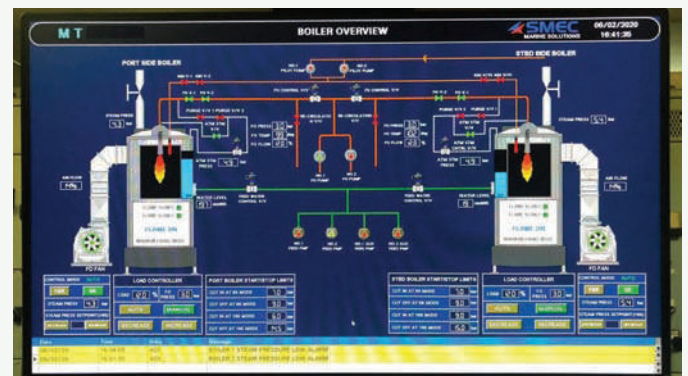
Our experts note the existing parameters, remove your control system and install and connect the SBCP hardware. They then perform a range of tests to make sure everything is working properly.

## • Drawings and training

We see to it that your Drawings is updated on board and at your technical office, but also in our own central systems. Keeping this information current will simplify any future dispatch of a spare part or service engineer. In addition, we provide SBCP Control training for your crew if needed.

## Other services / systems

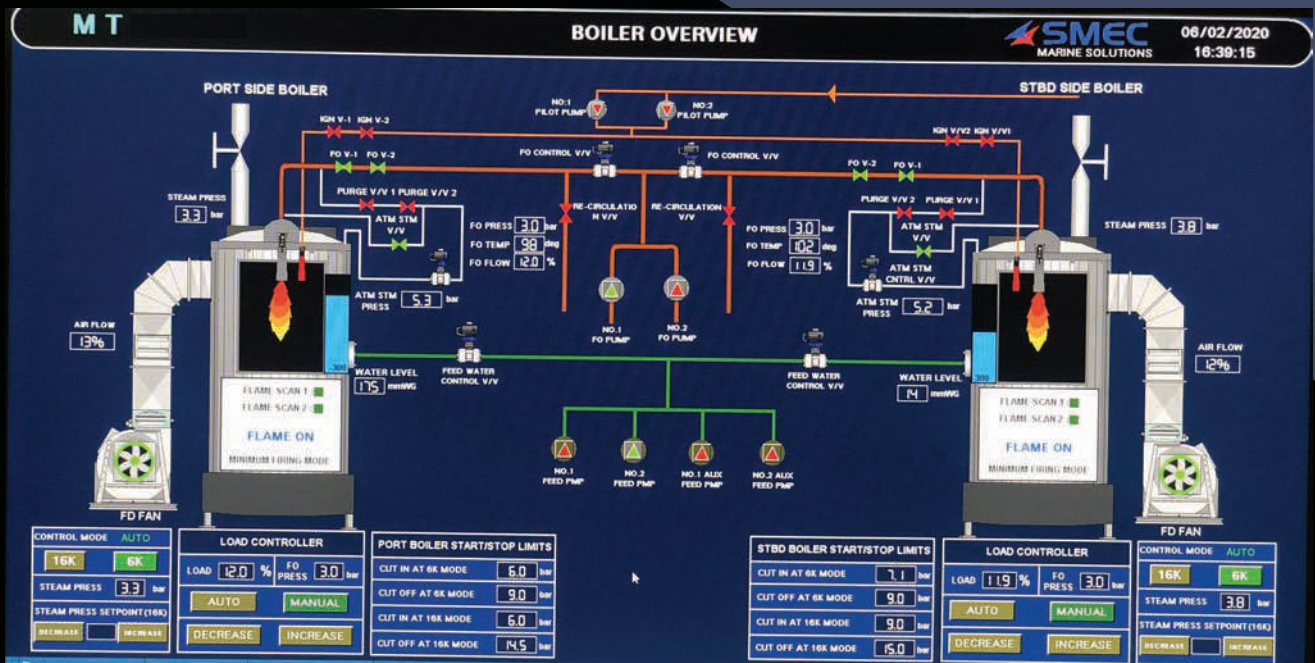
- SMEC SBCP Installation and Replacement for Boiler
- SMEC ESS Economizer safety control system
- SMEC Ring line pressure / Temp control system
- SMEC Vacuum consider level system replacement
- SMEC COPT-Steam flow control / Safety
- SMEC Auto Fuel Change Over System
- SMEC Smoke/O2 Monitoring System
- SMEC IGG Control & Monitoring system replacement
- SMEC Fuel Control System



## Scope of supply

- Updated and approved electrical drawings
- New local panel floor mounted with I/Os and HMI
- I/Os for power panel(s), EGB, MGO (depending on configuration)
- PLC and 22 Inch Touch Screen for engine control room
- Communication cable
- Remote Display installation
- Cable pulling and other related cabling
- Full field devices testing and calibration





## Extending performance

Our extensive service offers all the services you need to ensure top performance, maximum uptime and operating efficiency from your SMEC-SBCP equipment throughout its life cycle. Our committed team's expertise and the availability of spares bring you peace of mind



SMEC MARINE SOLUTIONS LLC

P.O.BOX:232304 | #181/2 | ALJADAF DOKKYARD DUBAI UAE T: +971 432 43 744 | F: +971 432 43 711 | M: +971 52 670 5946

service@smec.sg

SMEC AUTOMATION PVT LTD INDIA

SMEC MARINE SOLUTIONS LLC UAE

SMEC AUTOMATION PTE LTD SINGAPORE

solutions@smecclab.org  
+91 960 555 0001